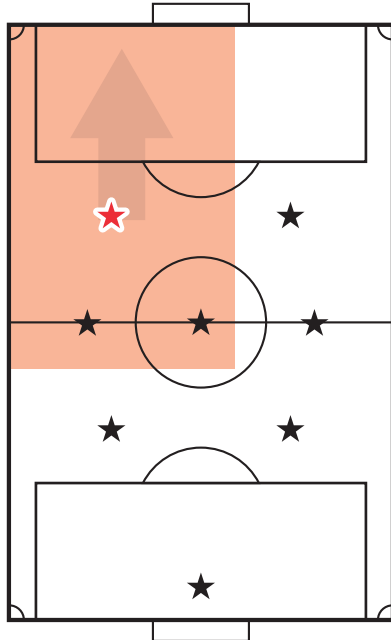
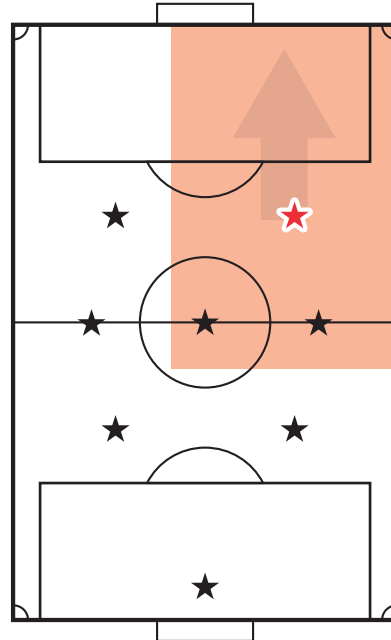


# Cover Areas for Each Position

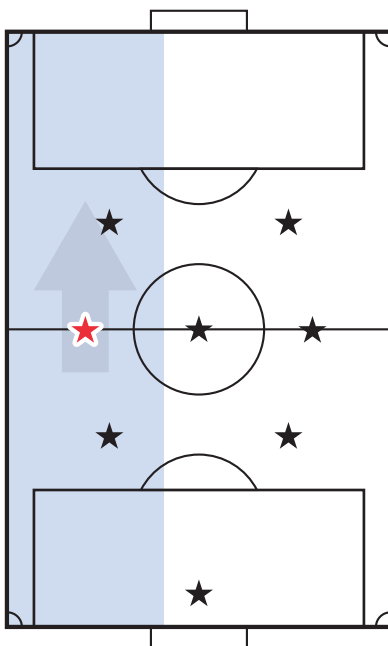
*Left Forward/Striker*



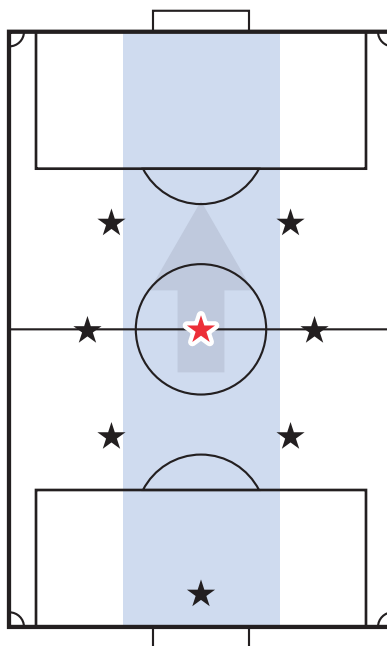
*Right Forward/Striker*



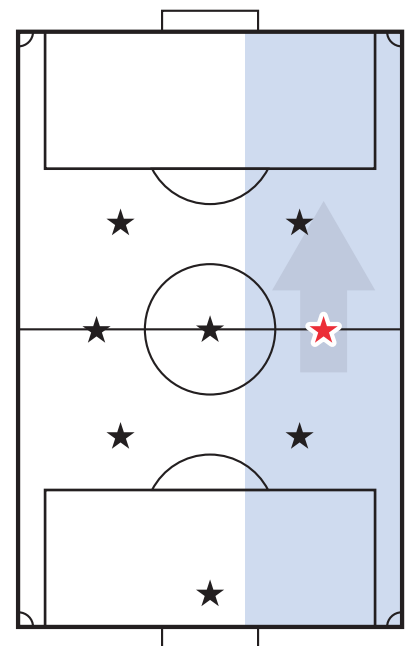
*Left HalfBack*  
take left side throw-ins



*Center HalfBack*

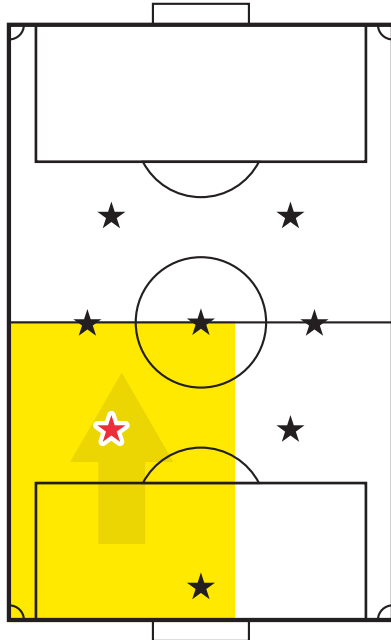


*Right HalfBack*  
take right side throw-ins

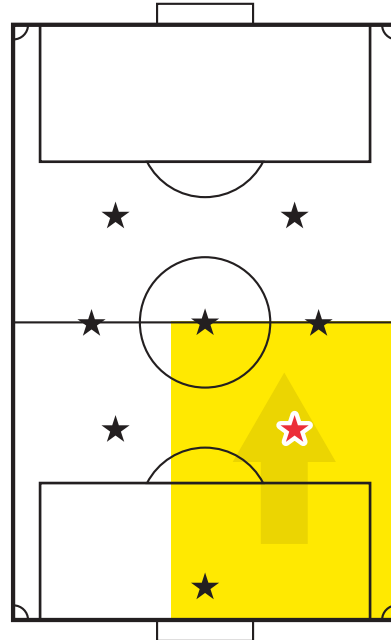


# Cover Areas for Each Position

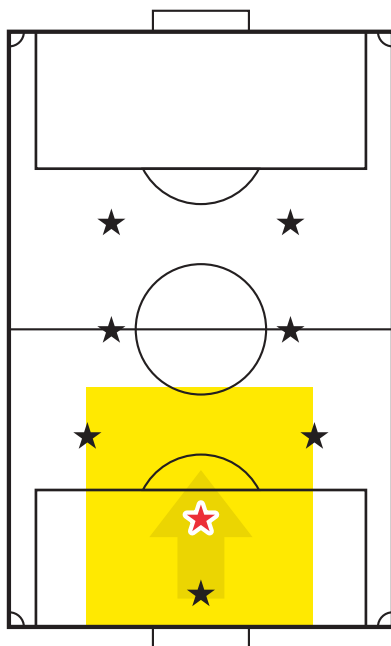
*Left FullBack*



*Right FullBack*



*SweeperBack*



At times, if we are getting beat on defense, we will move the center halfback to a sweeperback position. This person will play behind the fullbacks, to sweep away any ball that comes into his zone.